

COMMUNITY NEWS



CCG

MCC

> ALMONDSIDE CARE HOME, LIVINGSTON

i This newsletter is available to download online at:
WWW.C-C-G.CO.UK/COMMUNITY/SITE-INFORMATION

 @CCG_SCOTLAND

 @CCGSCOTLAND

ABOUT CCG

CCG is one of Scotland's largest privately-owned construction and manufacturing companies.

The Group employs over 790 staff spread across eight divisions including our Construction Division who will be leading this contract. With over 45 years' experience, our contracts team will undertake all works promptly and as efficiently as possible with minimal impact on the surrounding community.

MCCG

Almondside Care Home is being constructed on behalf of a joint venture company known as Morrison Community Care (CCG) Holdco Ltd.

CCG as a contractor and developer have partnered with the nationally-recognised Morrison Community Care Group to deliver modern, elderly accommodation across Scotland. We have worked together since 2017 and our new company was formed in 2021. To date we have created over 200 beds across 4 Local Authorities with developments set to get underway this year.



SCOPE OF WORKS

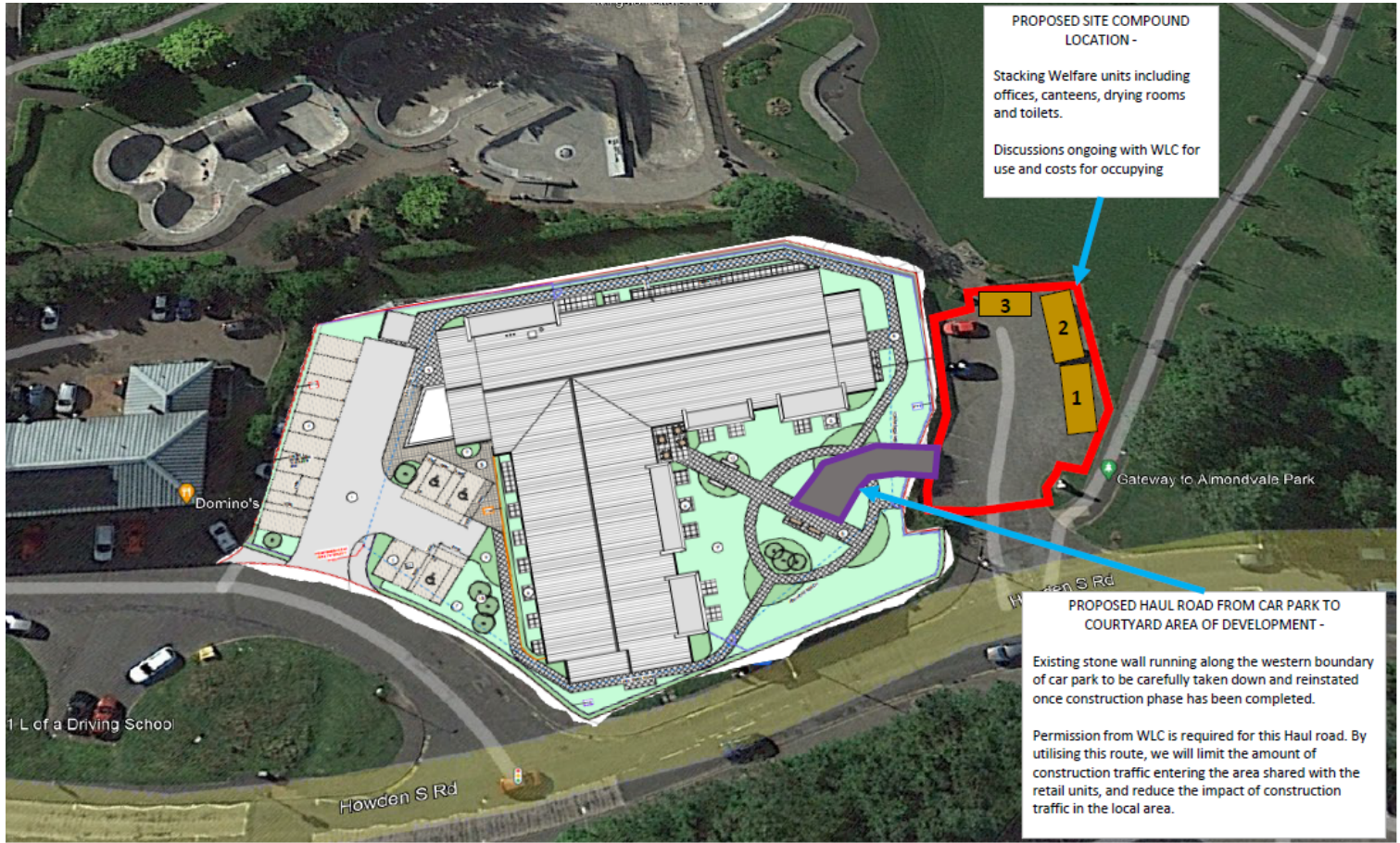
Almondside Care Home will comprise a purpose-built facility constructed upon the site of the former Club Earth on Howden South Road and will provide up to 66 bed spaces and a range of integrated amenities alongside sector-leading residential, nursing and dementia care services. It is being led by Morrison Community Care (CCG) Holdco Ltd and is set to be complete in summer-2024.

SITE ACTIVITY

CCG have made significant progress since the previous update. All drainage connections have been installed as well as the substructures and foundations.

As residents will note, our site team has commenced the installation and erection of the care home's superstructure (a "superstructure" is all of a building's components above ground and comprises the combination of wall zones and a roof structure to create one structure). This phase of work will lead the site team into the winter with the building being entirely wind and watertight before the Christmas holidays. As the superstructure continues to progress externally – we will see the introduction of internal trades such as electrical, plumbing and joinery which will lead the construction programme into the New Year.

Community members should be aware that the car park located to the eastern boundary will remain to the public closed for the duration of the construction programme.



The site is accessed via Howden South Road - CCG's site compound is positioned at the eastern boundary and areas of the site are being utilised for material laydown to minimise the impact of works at street-level. Local community members are advised to be vigilant as a result of increased traffic flow in the area - CCG have traffic management protocols in place to minimise the impact of both traffic flow and parking with a strict working schedule and deliveries undertaken out with peak hours whenever possible. We will do everything we can to minimise disruption and thank you for your ongoing cooperation. Should you have any concerns or questions, via the contact information provided below.

SAFETY

ACCESS TO THE SITE IS STRICTLY PROHIBITED



COMMUNITY ENGAGEMENT

CCG understand that engaging with the local community is important. For the duration of our time on-site, we will provide you with updates about our construction programme as well as informing you of any works that may impact your day-to-day lives - including such things as parking restrictions or road closures - via regular letter drops.

Our next Site Newsletter will be published in January but should you wish to raise any questions or concerns relating to the construction activity, please revert to our Site Manager who is based at our site compound full time Monday - Friday 8.00am to 4.30pm:

Joe Hunter, Site Manager
 E: JHunter@c-c-g.co.uk
 T: 07917 614298

mcc
 Morrison Community Care Group
www.morrisoncommunitycare.com